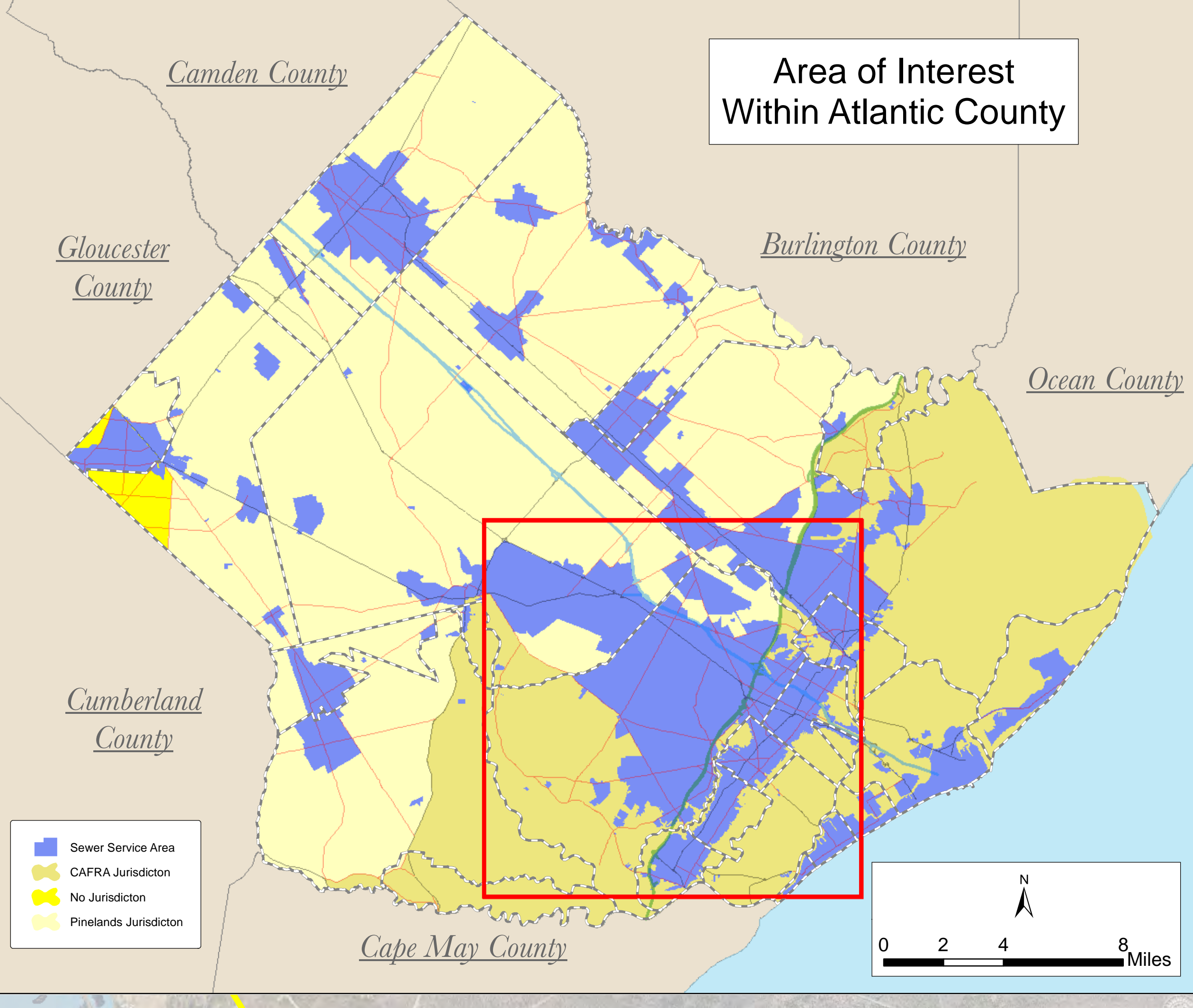


Egg Harbor Township Future Wastewater Service Area Adopted November 6, 2013



Locations of future pump stations, major interceptors, and trunk sewers are provided for general information only and will not serve as the basis for any future consistency determinations or permit renewals unless the pump station, major interceptor or trunk sewer is part of a State or Federally funded project.

Reference to N.J.A.C. 7:14, Riparian zones are 300 feet from top of bank for watersheds of a first order stream when no bank is apparent for waters designated as Category One and all upstream tributaries within the same HUC 14. 150 feet for waters designated Trout Production and all upstream waters, 150 feet for water designated Trout Maintenance and all upstream waters within one third mile measured along the length of the riparian zone, 150 feet for all riparian waters flowing through an area that contains documented habitat for a threatened or endangered species of plant or animal, which is critically dependent on the surface water body for survival, and all upstream waters (including tributaries) within one third mile as measured along the length of the surface water body, 150 feet for waters that are through and producing soils, and, 50 feet for all waters not designated as C1, trout waters, critically water dependent Threatened and/or Endangered Species Habitat, or associated with acid soils.

Surface waters that are designated Category One are listed in the Surface Water Quality Standards at N.J.A.C. 7:9B. The Department's Surface Water Quality Standards GIS data layer was utilized to determine these waters. The applicable 100 foot buffer has been applied to these waters and the proposed sewer service areas on the map. The riparian zone buffer with buffers have not been geographically removed from the sewer service area but are not proposed for sewer service. [Counties may map out the sewer with buffers also but the 300 foot buffers are the minimum, the sewer buffers are removed during the build-out analysis.] Additional determinations by the Department will be utilized to determine the extent of the sewer service areas on individual lots.

Furthermore, compliance with the riparian zone standard has been demonstrated by the adoption of municipal Riparian Corridor Ordinances, which have been updated to be in compliance with the Flood Hazard Control Act Rules (N.J.A.C. 7:13) and Water Quality Management Rules (N.J.A.C. 7:15). See municipal chapters for additional information.

All existing, new, or expanded industrial pretreatment facilities requiring Significant Indirect User (SIU) permits and/or Treatment Works Approvals, and which are located within the specified sewer service area, are deemed to be consistent.

The existing grant conditions and requirements (from Federal and State grants or loans for sewerage facilities) which provide for restriction of sewer service to environmentally sensitive areas, are unaffected by adoption of this WMP and compliance is required. Please see municipal WMP Chapters for the existence of any applicable environmentally sensitive areas in which Federal 201 grant limitations prohibit the extension of sewer service.

Individual subsurface sewage disposal systems (SSDS) for individual residences can only be constructed in depicted sewer service areas if legally enforceable guarantees are provided before such construction, that use of such systems will be discontinued when the depicted sewer service becomes available. This applies to SSDS that require certification from the Department under the Riparian Improvement Sewerage and Facilities Act (RISFA) 11:23 or individual Treatment Works Approval or New Jersey Pollutant Discharge Elimination System Permits (under NJAC 7:14A). It also applies to SSDS which require only local approvals. Compliance with the connection requirement has been demonstrated through adoption of municipal and/or sewerage authority ordinances. See municipal chapters for additional information.

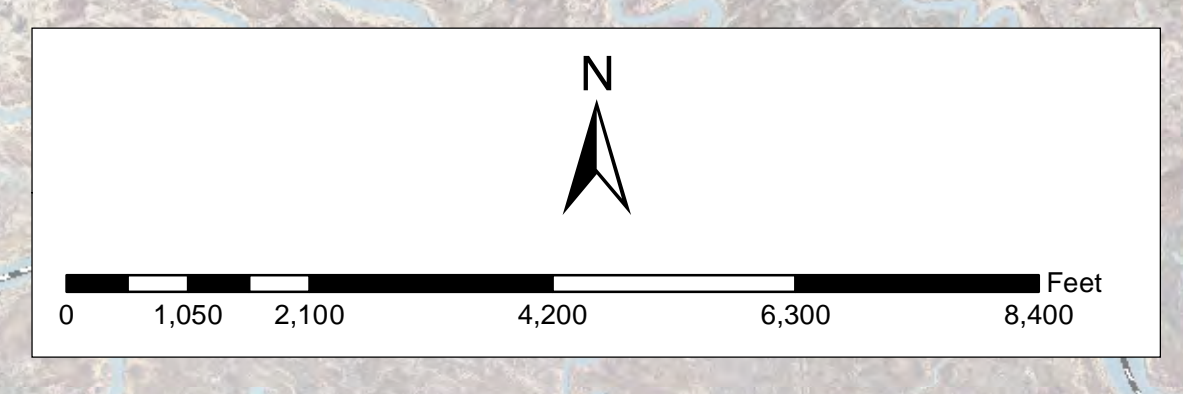
In areas mapped as wetlands, flood prone areas, suitable habitat for endangered and threatened species as identified on the Department's Landscape Map of Habitat for Endangered, Threatened and Other Priority Wildlife as Rank 3, 4, and 5, Natural Heritage Priority Sites, riparian zones, steep slopes, or designated river areas may be subject to special regulation under Federal or State statutes or rules, and interested persons should check with the Department for the latest information. Disposition of environmental features shall be for general information purposes only, and shall not be construed to define the legal geographic jurisdiction of such statutes or rules.

Areas located within the watershed of a Freshwater One (FW1) stream, as classified in the Surface Water Quality Standards, and/or that have Class 1-A ground water (Ground Water of Special Ecological Significance), as classified in the Ground Water Quality Standards, are identified as "non-degradation" water areas based on the Surface Water Quality Standards at N.J.A.C. 7:9B and/or the Ground Water Quality Standards at N.J.A.C. 7:9C. Where this information has been studied and reviewed as part of the WMP process this classification applies to the WMP. Non-degradation water areas shall be maintained in their natural state and shall be subject to restrictions on development, but are not limited to, the following: 1) DEP will not approve any pollutant discharge to ground water nor approve any human activity which results in a degradation of natural quality except for the sewage or controlled operation of existing facilities serving existing developments. For additional information please see the Surface Water Quality Standards at N.J.A.C. 7:9B and/or the Ground Water Quality Standards at N.J.A.C. 7:9C.

Proposed developments lying into existing and proposed sewer service areas which require coastal permits must demonstrate compliance with all applicable sections of the Coastal

- Sewer Service Area
- Municipal Buildings
- GS Parkway
- Municipal Roads
- AC Expressway
- US & State Highways
- County Routes
- Jurisdictions
- Municipalities

Facility Name	NUPKES
Alpine Village Mobile Home Court	NJ00107924
L.S. Restaurant	NJ00107977
Somerset Cove Marina LLC	NJ00109009
Coastline Golf Course	NJ00109200
Marlin Apartments	NJ00146897
East Manor - Atlantic County Park	NJ00139459
The Brewery Restaurant	NJ00178627
Oceanville Station	NJ00167231
Galloway National Golf Club Plant	NJ00109886
Chesnut Lake Campground	NJ00105348
Hickory Haven Campground LLC	NJ00086731
Lazy River Condo Campground	NJ00089036
Yogi Berra Johnson Park	NJ00090500
Resistant Valley Campground	NJ00095103
Clare of Weymouth Plant	NJ00090652
Alpine Village Mobile Home Court	NJ00109204
Richard Glass Co.	NJ00064474
Willing River Campground	NJ00085267
Pilgrim Academy	NJ00134732
Pilgrim Academy	NJ00134732
Holly Acres Best Holiday Inn - Park	NJ00097037
Millican Woods Mobile Home Park	NJ00112640
Buena Family Manor	NJ00094948
Indian Branch Park Campground	NJ00102717
Scholar, Inc.	NJ0032441
Palmer Playgroup	NJ00169705
Liberty Square Enterprises LLC	NJ00134897
Paradise Lakes Campground	NJ00090667
Stratford Professional Center	NJ00179279
Ray Avenue Village Mobile Home Park	NJ00064417
Colonial Meadows Family Campground	NJ00095120
Ray Avenue Village Mobile Home Park	NJ00064370
Chickens Mobile Home Park LLC	NJ00094336
Blueberry Hill Campground	NJ00086306
Old Country Inn	NJ0010111
Country Oaks	NJ00090251
Weymouth Twp. Elementary School plant	NJ0010433
Barwood School	NJ00093440
East Manor Elementary School	NJ00105431
Falson Elementary School	NJ00162892
Moorestown St. Ignace School	NJ0017032
Red Wing Lakes Campground	NJ00138738
South Jersey Golf Company	NJ00109581
St. Augustine Preparatory School	NJ00132942
Seaside Casino	NJ00093314
Villa Romana Restaurant	NJ00166254
Willing Glass Co.	NJ0014004



This map is for demonstration purposes only and was not developed in accordance with National Map Accuracy Standards. Any use of this product with respect to accuracy and precision shall be the sole responsibility of the user. The map was developed, in part, using New Jersey Department of Environmental Protection Geographic Information System (GIS) digital data, in conjunction with the Atlantic County Office of Geographic Information Systems, but this secondary product has not been verified by NJDEP and is not state authorized. The geodetic accuracy and precision of the GIS data contained in this map has not been developed nor verified by a professional licensed land surveyor and shall not be used as a basis for any legal action. The map is intended to be used as a general reference and location of true ground horizontal and vertical controls.

File: AtlanticCounty_SSA_110613_EHT.mxd Printed on: 10/19/2015

