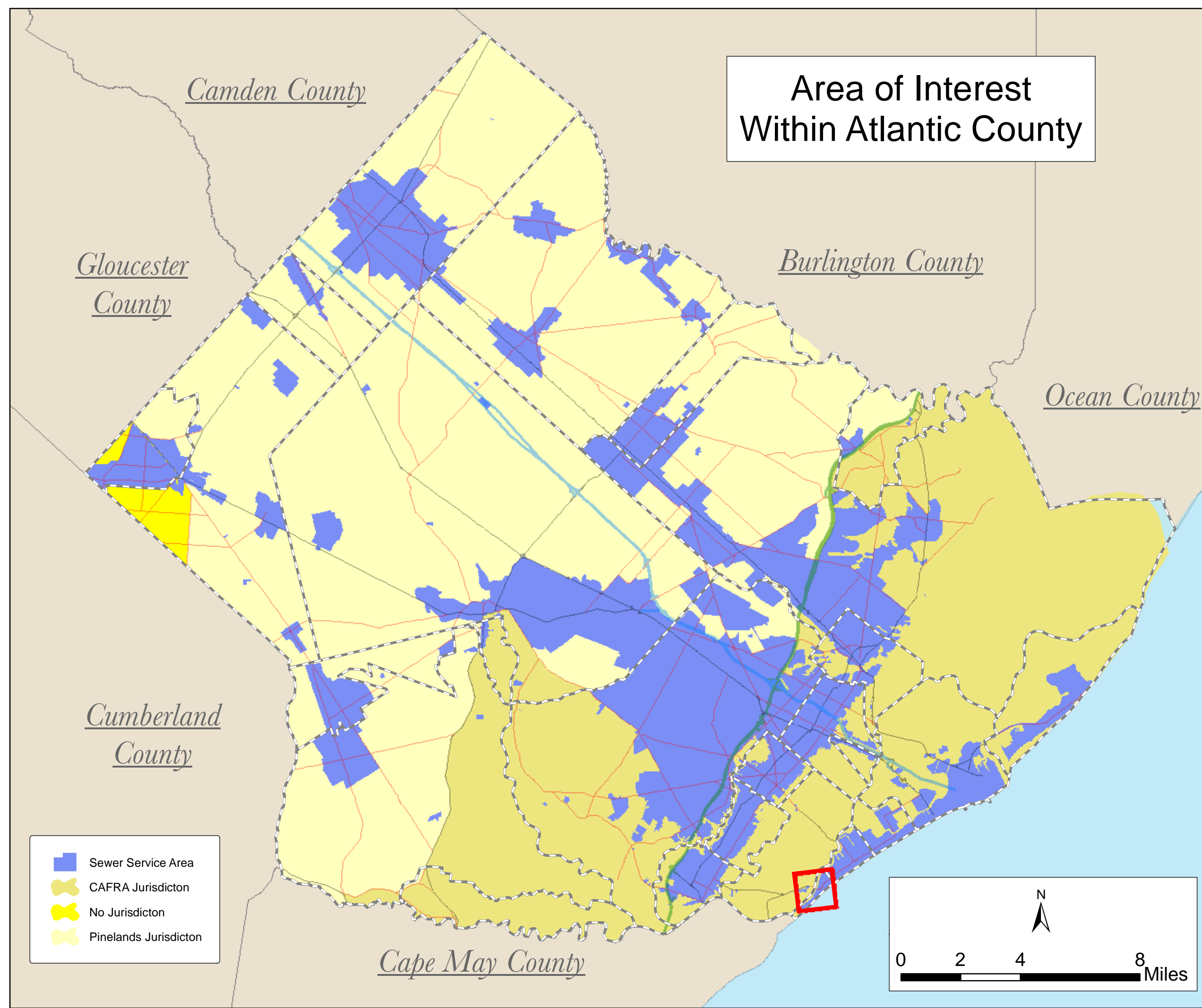




Longport Future Wastewater Service Area Adopted November 6, 2013

Area of Interest
Within Atlantic County



Locations of future pump stations, major interceptors, and trunk sewers are being provided for general information only and will not serve as the basis for any future consistency determinations or permit reviews unless the pump station, major interceptor or trunk sewer is part of a State or Federally funded project.

Pursuant to N.J.A.C. 7:15, Riparian zones are 300 feet from the edge of, or continuation of, a first order stream where no dam is approved for waters designated as Category One and all upstream tributaries within the same HUC 14. 150 feet for waters designated Trout Production and all upstream waters, 150 feet for water designated Trout Maintenance and all upstream waters within one river mile of riparian zones, 150 feet for any segments of water flowing through or over the riparian zone that are critical habitat for a threatened or endangered species of plant or animal, which is critically dependent on the surface water body for survival, and all upstream waters (including tributaries) within one river mile measured along the length of the surface water body, 150 feet for waters that flow through sand-producing soils, and 50 feet for all waters not designated as C1, trout waters, critically water dependent Threatened and/or Endangered Species Habitat, or associated with acid soils.

Surface waters that are designated Category One are listed in the Surface Water Quality Standards at N.J.A.C. 7:9B. The Department's "Surface Water Quality Standards" GIS data layer was utilized to determine these waters. The applicable 300 foot buffer has been applied to these waterways and removed from the proposed sewer service areas on the map. Lesser width buffers have not been graphically removed from the sewer service area but are not proposed for sewer service. (Counties may map out the lesser with buffers also but the 300' buffers are the minimum. The lesser buffers are removed during the build-out analysis.) Jurisdictional determinations by the Department will be utilized to determine the extent of the sewer service area on individual lots.

Furthermore, compliance with the riparian zone standard has been demonstrated by the adoption of municipal Riparian Corridor Ordinances, which have been updated to be in compliance with the Flood Hazard Control Act Rules (N.J.A.C. 7:13) and Water Quality Management Rules (N.J.A.C. 7:15). See municipal chapters for additional information.

All existing, new, or expanded industrial pretreatment facilities requiring Significant Industrial User (SIU) permits and/or Treatment Works Approvals, and which are located within the specified sewer service area, are deemed to be consistent.

The existing grant conditions and requirements (from Federal and State grants or loans for sewerage facilities) which provide for restriction of sewer service to environmentally sensitive areas are unaffected by adoption of this WMP and compliance is required. Please see municipal WMP Chapters for the existence of any applicable environmentally sensitive areas in which Federal 201 grant limitations prohibit the extension of sewer service.

Individual subsurface sewage disposal systems (ISSDS) for individual residences can only be constructed in designated sewer service areas if legally enforceable guarantees are provided, before such construction, the use of such systems will be discontinued when the designated sewer service becomes available. This applies to ISSDS that require certification from the Department under the Ready-to-Install Sewerage and Sanitation Act (N.J.S.A. 15:25) or individual Treatment Works Approval or New Jersey Polluted Discharge Elimination System Permits (under N.J.A.C. 7:14A). It also applies to ISSDS which require local approvals. Compliance with the connection requirement has been demonstrated through adoption of municipal and/or sewerage ordinances. See municipal chapters for additional information.

Development in areas mapped as wetlands, flood prone areas, suitable habitat for endangered and threatened species as identified on the Department's Landscape Maps of Habitat for Endangered, Threatened and Other Priority Wildlife as Rank 3, 4, and 5, Natural Heritage Priority Sites, riparian zones, steep slopes, or designated river areas may be subject to special regulation under Federal or State statutes or rules, and interested persons should check with the Department for the latest information. Deposition of environmental features shall be for general information purposes only, and shall not be construed to define the legal geographic jurisdiction of such statutes or rules.

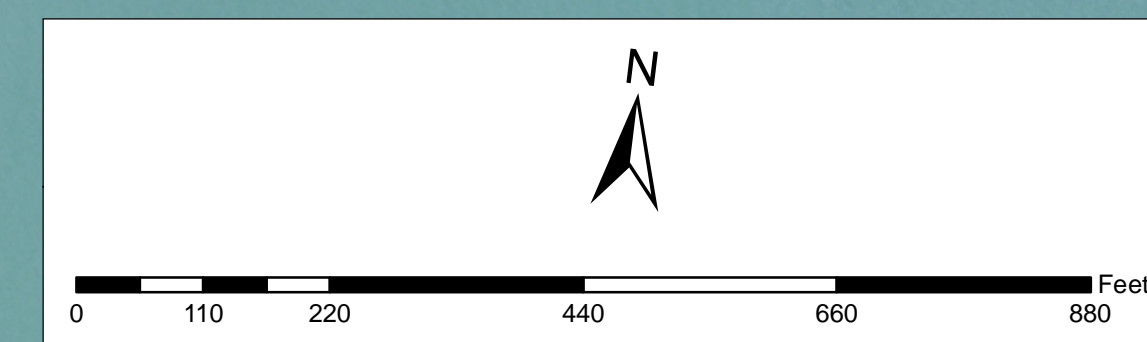
Areas located within the watershed of a Freshwater One (FW1) stream, as classified in the Surface Water Quality Standards, and/or that have Class 4-A ground water (Ground Water of Special Ecological Significance), as classified in the Ground Water Quality Standards, are identified as "Non-degradation" water area based on the Surface Water Quality Standards at N.J.A.C. 7:9B, and/or the Ground Water Quality Standards at N.J.A.C. 7:9-6. Where this requirement has been studied and reviewed as part of the WMP process this classification appears on Map 43. Non-degradation water areas shall be maintained in their natural state (not suitable for protection) and are subject to restrictions including, but not limited to, the following: 1) DEP will not approve any pollutant discharge to ground water nor approve any human activity which results in a degradation of natural quality except for the upgrade or continued operation of existing facilities serving existing development. For additional information please see the Surface Water Quality Standards at N.J.A.C. 7:9B, and/or the Ground Water Quality Standards at N.J.A.C. 7:9-6.

Proposed developments being into existing and proposed sewer service areas which require coastal permits must demonstrate compliance with all applicable sections of the Coastal

Facility Name	NUPDES
Alpine Village Mobile Home Court	NU00107824
L'S Restaurant	NU00167797
Somers Cove Marina LLC	NU00109699
Coastal Golf Course	NU00139200
Marlin Apartments	NU00146897
East Manor - Atlantic County Park	NU00138459
The Palace Restaurant	NU00128627
Oceanville Station	NU00167231
Gallop by National Golf Club Plant	NU019986
Overland Lakes Campground	NU00135348
Hickory Haven Campground LLC	NU00085731
Lazy River Courts Campground	NU00089598
Yogi Berra Softball Park	NU00065690
Pleasant Valley Campground	NU00085103
Oaks of Weymouth Plant	NU0006965
Alpine Village Mobile Home Court	NU00107824
Richard Glass Co.	NU0006474
Winding River Campground	NU00083687
Pilgrim Academy	NU00134732
Pilgrim Academy	NU00134732
High Acres Beach Holiday Trav-L-Park	NU00087097
Mulca Woods Mobile Home Park	NU00112640
Buena Family Manor	NU00049448
Indian Branch Park Campground	NU0019711
Scholler, Inc.	NU002441
Palmon Playground	NU00169785
Liberty Square Enterprises LLC	NU00134937
Paradise Lakes Campground	NU00080667
Seriville Professional Center	NU0013075
Bay Breeze Village Mobile Home Park	NU00044117
Colonial Meadows Family Campground	NU0008510
Egg Harbor River Resort	NU00043919
Oakcrest Mobile Home Park LLC	NU0004336
Baileys Hill Campground	NU0008366
CAF Centers Inc.	NU001071
Country Oaks	NU0008251
Weymouth Twp. Elementary School plant	NU016433
Baywood School	NU008340
East Manor Elementary School	NU0015431
Falcon Elementary School	NU0016092
Mooring at Seaside Pier	NU007032
Red Wing Lakes Campground	NU00138738
South Jersey Gas Company	NU016565
St. Augustine Preparatory School	NU015942
Swirestar Casino	NU0008314
Vila Pizzeria Restaurant	NU0016234
Wilmed Glass Co.	NU007404

EGG HARBOR TOWNSHIP

MARGATE



- Sewer Service Area
- Waste Water Treatment Plant
- Municipal Buildings
- GS Parkway
- Municipal Roads
- AC Expressway
- US & State Highways
- County Routes
- Jurisdictions
- Municipalities

This map is for demonstration purposes only and was not developed in accordance with National Map Accuracy Standards. Any use of this product with respect to accuracy and precision shall be the sole responsibility of the user. The map was developed, in part, using New Jersey Department of Environmental Protection Geographic Information System (GIS) digital data, in conjunction with the Atlantic County Office of Geographic Information Systems, but this secondary product has not been verified by NJDEP and is not state authorized. The geodetic accuracy and precision of the GIS data contained in this map has not been developed nor verified by a professional licensed land surveyor and shall not be used in matters requiring delineation and location of true ground horizontal and/or vertical controls.