



Mullica Future Wastewater Service Area Adopted November 6, 2013

This map is for demonstration purposes only and was not developed in accordance with National Map Accuracy Standards. Any use of this product with respect to accuracy and precision shall be the sole responsibility of the user. The map was developed in part using New Jersey Department of Environmental Protection Geographic Information System (GIS) digital data, in conjunction with the Atlantic County Office of Geographic Information Systems, but this secondary product has not been verified by NJDEP and is not state authorized. The geodetic accuracy and precision of the GIS data contained in this map has not been developed nor verified by a professional licensed land surveyor and shall not be nor is intended to be used in matters requiring delineation and location of true ground horizontal and/or vertical.

File: AtlanticCounty_SSA_110613_MUL.mxd Printed on: 10/19/2015

Locations of future pump stations, major interceptors, and trunk sewers are being provided for general information only and will not serve as the basis for any future consistency determinations or permit reviews unless the pump station, major interceptor or trunk sewer is part of a State or federally funded project.

Pursuant to N.J.A.C. 7:15, Riparian zones are 300 feet from top of bank for centerline of a first order stream where no bank is apparent for waters designated as Category One and all upstream tributaries within the same HUC; 14, 150 feet for waters designated Flood Protection and all upstream waters; 150 feet for water designated Flood Maintenance and all upstream waters within one linear mile as measured along the length of the regulated water; 150 feet for any segments of water flowing through an area that contains documented habitat for a threatened or endangered species of plant or animal, which is critically dependent on the surface water body for survival; and all upstream waters (including tributaries) within one linear mile as measured along the length of the surface water body; 150 feet for waters that run through acid-producing soils; and; 50 feet for all waters not designated as C1, trout waters, critically water dependent Threatened and/or Endangered Species Habitat, or associated with acid soils.

Surface waters that are designated Category One are listed in the Surface Water Quality Standards at N.J.A.C. 7:9B. The Department's "Surface Water Quality Standards" GIS data layer was utilized to determine these waters. This applicable 300 foot buffer has been applied to these waterways and removed from the proposed sewer service areas on the mapping. Lesser width buffers have not been graphically removed from the sewer service area but are not proposed for sewer service. (Courtney may map out the lesser with buffers also but the 300' buffers are the minimum, the lesser buffers are removed during the build-out analysis.) Jurisdictional determinations by the Department will be utilized to determine the extent of the sewer service area on individual lots.

Furthermore, compliance with the riparian zone standard has been demonstrated by the adoption of municipal Riparian Corridor Ordinances, which have been updated to be in compliance with the Flood Hazard Control Act Rules (N.J.A.C. 7:13) and Water Quality Management Rules (N.J.A.C. 7:15). See municipal chapters for additional information.

All existing, new, or expanded industrial pretreatment facilities requiring Significant Indirect Use (SIU) permits and/or Treatment Works Approvals, and which are located within the specified sewer service area, are deemed to be consistent.

Pre-existing grant conditions and requirements (from Federal and State grants or loans for sewerage facilities) which provide for restriction of sewer service to environmentally sensitive areas, are unaffected by adoption of this WMP and compliance is required. Please see municipal WMP Chapters for the existence of any applicable environmentally sensitive areas in which Federal 201 grant limitations prohibit the extension of sewer service.

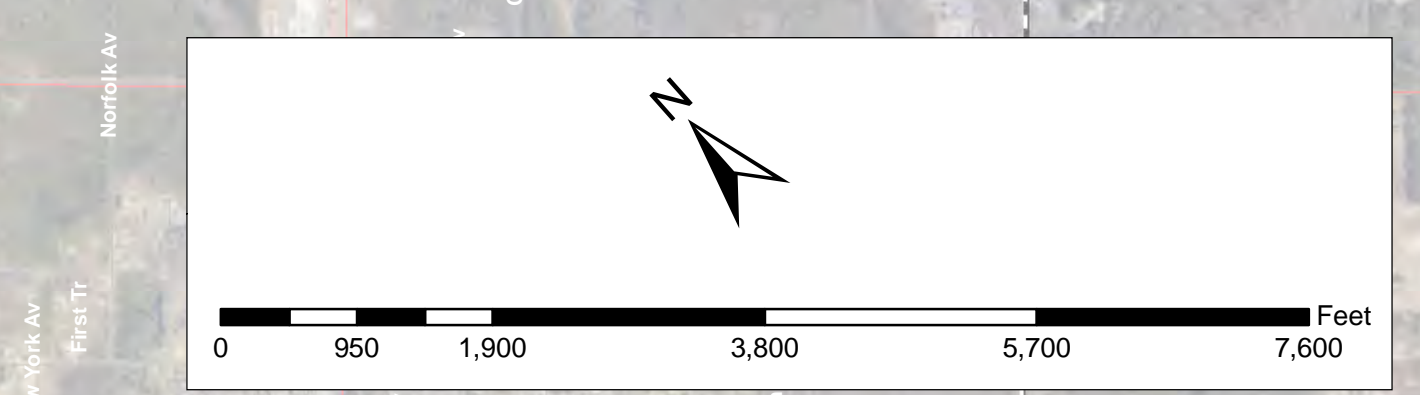
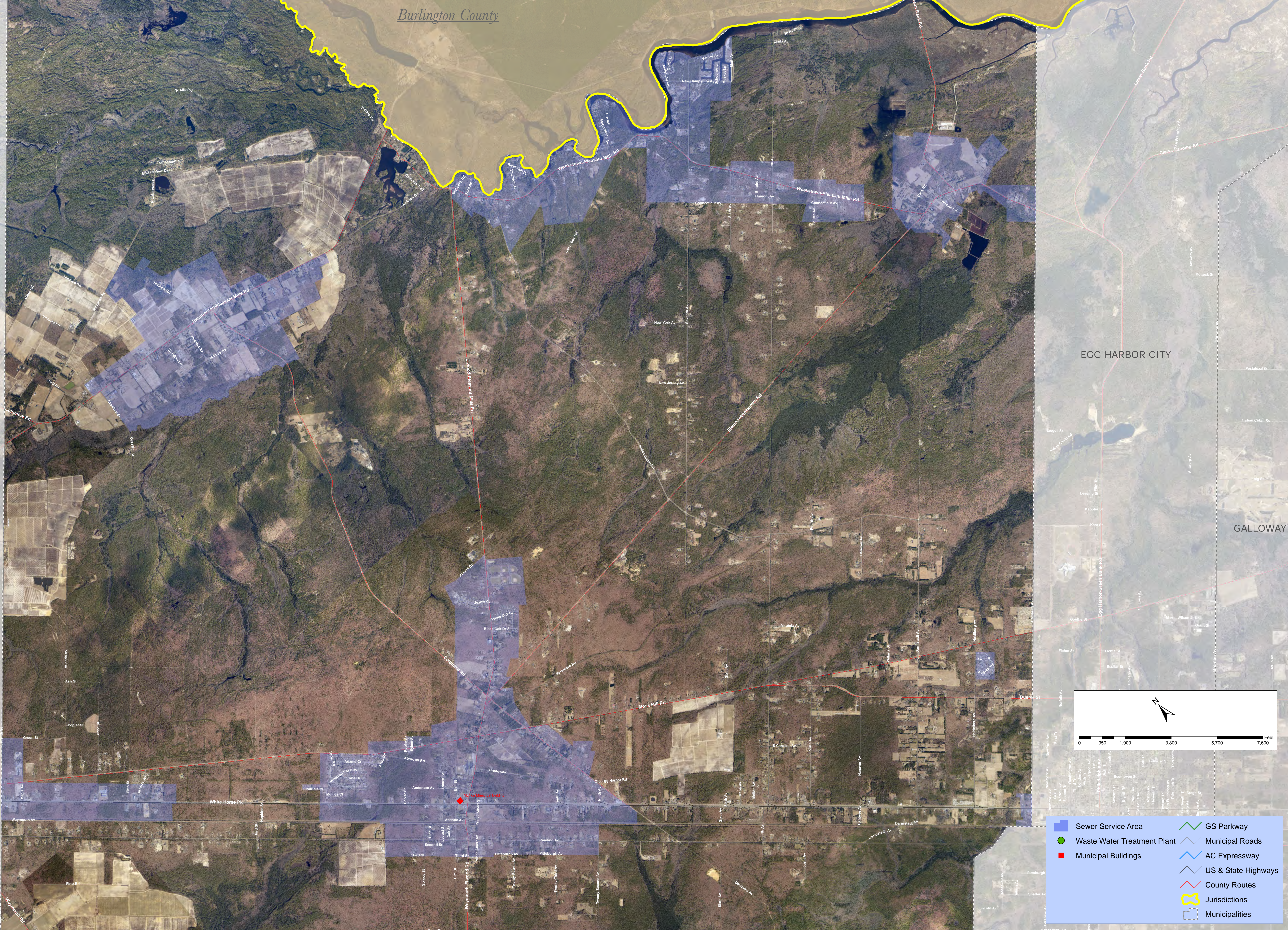
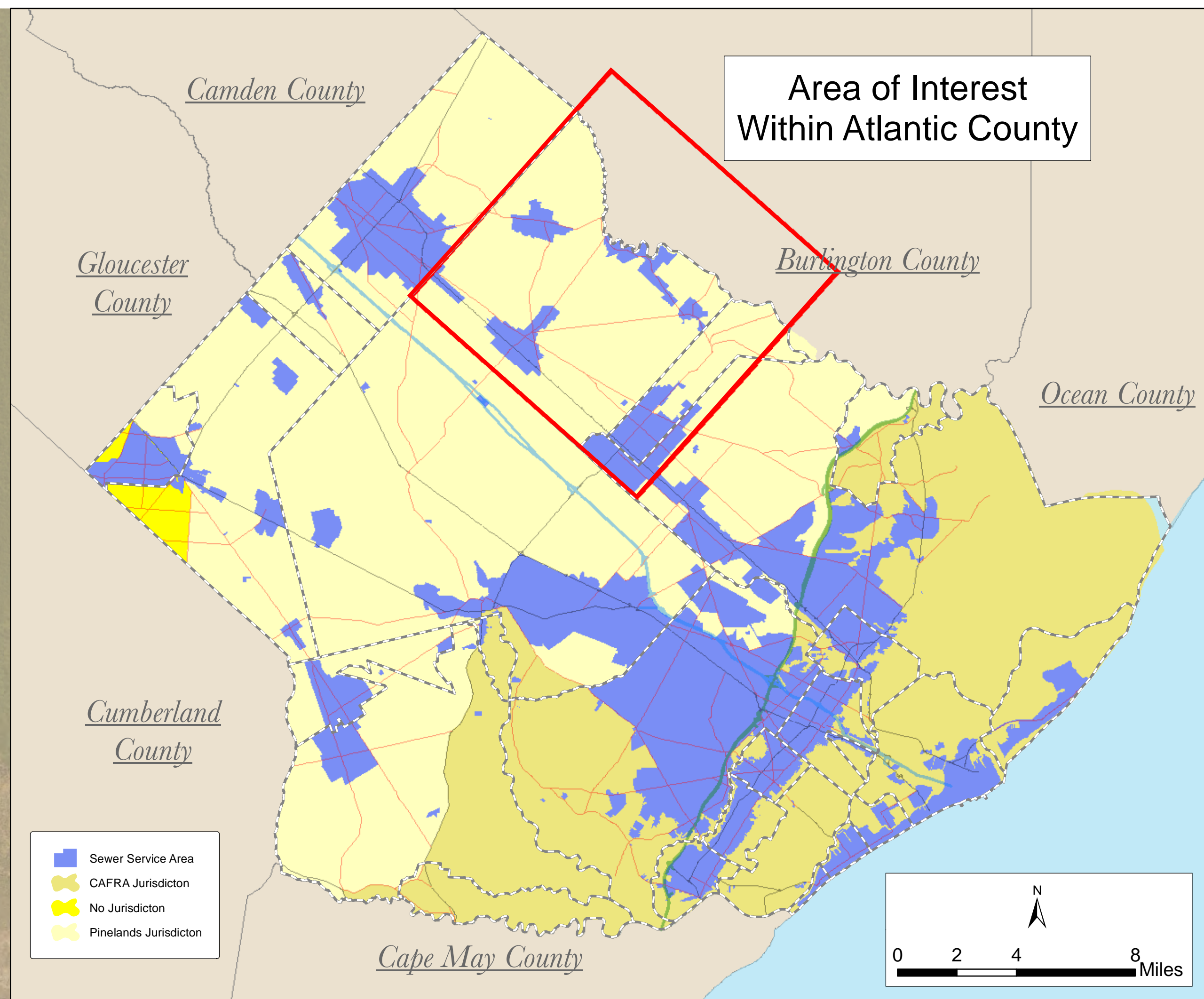
Individual subsurface sewage disposal systems (SSDS) for individual residences can only be constructed in designated sewer areas if legally enforceable guarantees are provided, before such construction, that use of such systems will be discontinued when the designated sewer service becomes available. This applies to SSDS that require certification from the Department under the Ready Improvement Sewerage and Facilities Act (NJSA 14:27-23) or individual Treatment Works Approvals or New Jersey Pollutant Discharge Elimination System Permits (under NJAC 7:14C). It also applies to SSDS which require only local approval. Compliance with the connection requirement has been demonstrated through adoption of municipal and/or sewerage authority ordinances. See municipal chapters for additional information.

Development in areas mapped as wetlands, flood prone areas, suitable habitat for endangered and threatened species as identified on the Department's Landscape Maps of Habitat for Endangered, Threatened and Other Priority Wildlife as Rank 1, 4, and 5, Natural Heritage Priority Sites, riparian zones, steep slopes, or designated over areas may be subject to special regulation under Federal or State statutes or rules, and interested persons should check with the Department for the latest information. Deposition of environmental materials shall be for general information purposes only, and shall not be construed to define the legal geographic jurisdiction of such statutes or rules.

Areas located within the watershed of a Freshwater One (FW1) stream, as classified in the Surface Water Quality Standards, and/or that have Class 1-A ground water (Ground Water of Special Ecological Significance) as outlined in the Ground Water Quality Standards, are identified as "non-regulation" water areas based on the Surface Water Quality Standards at N.J.A.C. 7:9B, and/or the Ground Water Quality Standards at N.J.A.C. 7:9B. Where this requirement has been studied and reviewed as part of the WMP process this classification applies on the map. Non-regulation water areas shall be maintained in their natural state and shall be subject to restrictions on development, but not limited to, the following: 1) DEP will not approve any pollutant discharge to ground water nor approve any human activity which results in a degradation of natural quality except for the upgrade or continued operation of existing facilities serving existing development. For additional information please see the Surface Water Quality Standards at N.J.A.C. 7:9B, and/or the Ground Water Quality Standards at N.J.A.C. 7:9B.

Proposed developments tying into existing and proposed sewer service areas which require coastal permits must demonstrate compliance with all applicable sections of the Coastal

Facility Name	NJDEP
Alpine Village Mobile Home Court	NJ00107624
T.S. Restaurant	NJ00167917
Somerset Cove Marina LLC	NJ00106009
Coventry Golf Course	NJ00139220
Marin Apartments	NJ00146897
Estel Manor - Atlantic County Park	NJ00139459
The Foreway Restaurant	NJ00128627
Coastal Station	NJ00167921
Golfway National Golf Club Plant	NJ0106886
Chestnut Lake Campground	NJ00130348
Hickory Haven Campground LLC	NJ00095731
Lazy River Campground	NJ00095936
Fog Bear's Jellystone Park	NJ00095930
Reiner Valley Campground	NJ00095930
Oaks of Weymouth Plant	NJ00090682
Alpine Village Mobile Home Court	NJ00107624
Richard Glass Co.	NJ00095474
Windward River Campground	NJ00095367
Plym Academy	NJ00134932
Plym Academy	NJ00134932
Truly Acres Best Holiday Tru-L-Park	NJ00095707
Milica Woods Mobile Home Park	NJ00112640
Buana Family Manor	NJ00094848
Indian Branch Campground	NJ0102717
Scholar, Inc.	NJ0032441
Platinum Playgroup	NJ00169765
Liberty Square Enterprises LLC	NJ00134637
Pruders Lakes Campground	NJ00096967
Smithville Professional Center	NJ0073679
Bay Breeze Village Mobile Home Park	NJ00094477
Colonial Meadows Family Campground	NJ00095120
Egg Harbor River Resort	NJ00094379
Charmant Mobile Home Park LLC	NJ00094336
Blueberry Hill Campground	NJ00095366
C&E Centers Inc	NJ0051071
Country Oaks	NJ00095251
Weymouth Twp. Elementary School plant	NJ010433
Timwood School	NJ00098340
East Manor Elementary School	NJ00156431
Folkorn Elementary School	NJ00162882
Hickory Hill Elementary School	NJ0017022
Red King Lakes Campground	NJ00138736
South Jersey Gas Company	NJ0156651
St. Augustine Respiratory School	NJ0132042
Swirewater Casino	NJ00090314
Villa Romana Restaurant	NJ00168254
Wilmer Glass Co.	NJ0074004



Sewer Service Area	GS Parkway
Waste Water Treatment Plant	Municipal Roads
Municipal Buildings	AC Expressway
	US & State Highways
	County Routes
	Jurisdictions
	Municipalities