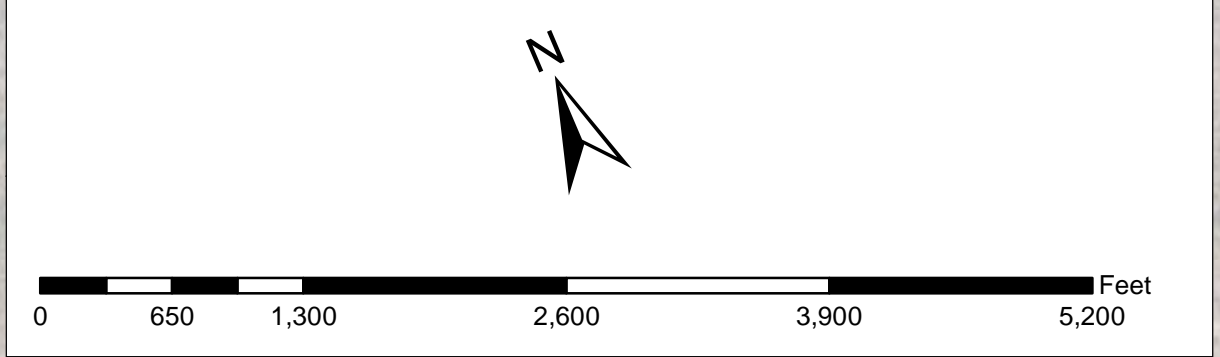
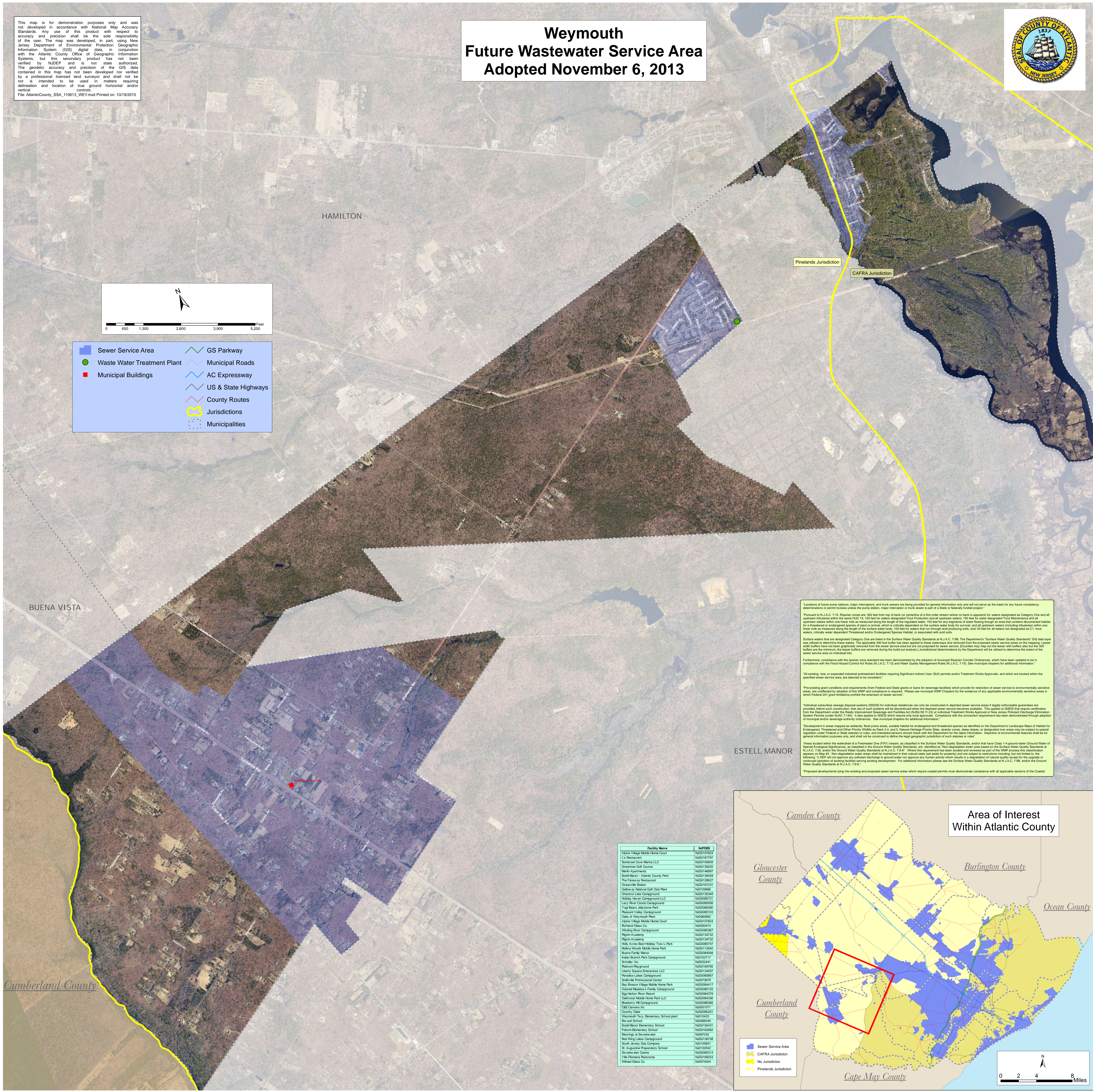


This map is for demonstration purposes only and was not developed in accordance with National Map Accuracy Standards. Any use of this product with respect to accuracy and precision shall be the sole responsibility of the user. The map was developed, in part, using New Jersey Department of Environmental Protection Geographic Information System (GIS) digital data, in conjunction with the Atlantic County Office of Geographic Information Systems, but this secondary product has not been verified by NJDEP and is not state authorized. The geodetic accuracy and precision of the GIS data contained in this map has not been developed nor verified by a professional licensed land surveyor and shall not be used in matters requiring delineation and location of true ground horizontal and/or vertical controls.
 File: AtlanticCounty_SSA_110613_WEY.mxd Printed on: 10/19/2015

Weymouth Future Wastewater Service Area Adopted November 6, 2013



- Sewer Service Area
- Waste Water Treatment Plant
- Municipal Buildings
- GS Parkway
- Municipal Roads
- AC Expressway
- US & State Highways
- County Routes
- Jurisdictions
- Municipalities



*Locations of future pump stations, major interceptors, and trunk sewers are being provided for general information only and will not serve as the basis for any future consistency determinations or permit reviews unless the pump station, major interceptor or trunk sewer is part of a State or federally funded project.

*Pursuant to N.J.A.C. 7:15, Riparian zones are: 300 feet from top of bank or centerline of a first order stream where no bank is apparent for waters designated as Category One and all upstream tributaries within the same HUC 14, 150 feet for waters designated Trout Production and all upstream waters; 150 feet for water designated Trout Maintenance and all upstream waters within one linear mile as measured along the length of the regulated water; 150 feet for any segments of water flowing through an area that contains documented habitat for a threatened or endangered species of plant or animal, which is critically dependent on the surface water body for survival, and all upstream waters (including tributaries) within one linear mile as measured along the length of the surface water body; 150 feet for waters that run through acid-producing soils; and 50 feet for all waters not designated as C1, trout waters, critically water dependent Threatened and/or Endangered Species Habitat, or associated with acid soils.

*Surface waters that are designated Category One are listed in the Surface Water Quality Standards at N.J.A.C. 7:9B. The Department's "Surface Water Quality Standards" GIS data layer was utilized to determine these waters. The applicable 300 foot buffer has been applied to these waters and removed from the proposed sewer service areas on the map(s). Lesser width buffers have not been geographically removed from the sewer service area but are not proposed for sewer service. Counties may map out the buffer also but the 300' buffers are the minimum. The lesser buffers are removed during the hydrologic analysis. Jurisdictional determinations by the Department will be utilized to determine the extent of the sewer service area on individuals.

*Furthermore, compliance with this riparian zone standard has been demonstrated by the adoption of municipal Riparian Control Ordinances, which have been updated to be in compliance with the Flood Hazard Control Act Rules (N.J.A.C. 7:13) and Water Quality Management Rules (N.J.A.C. 7:15). (See municipal chapters for additional information.)

*All existing, new, or expanded industrial pretreatment facilities requiring Significant Indirect User (SIU) permits and/or Treatment Works Approvals, and which are located within the specified sewer service area, are deemed to be consistent.

*The existing grant conditions and requirements (from Federal and State grants or loans for sewerage facilities) which provide for restriction of sewer service to environmentally sensitive areas, are unaffected by adoption of this WMP and compliance is required. Please see municipal WMP Chapters for the existence of any applicable environmentally sensitive areas in which Federal 201 grant limitations prohibit the extension of sewer service.

*Individual subsurface sewage disposal systems (SSEDS) for individual residences can only be constructed in depicted sewer service areas if legally enforceable guarantees are provided, before such construction, that use of such systems will be discontinued when the depicted sewer service becomes available. This applies to SSEDS that require certification from the Department under the Riparian Improvement Sewerage and Facilities Act (N.J.S.A. 13:23) or individual Treatment Works Approval or New Jersey Pollutant Discharge Elimination System Permits under N.J.A.C. 7:14N. It also applies to SSEDS which require only local approval. Compliance with the certification requirement has been demonstrated through adoption of municipal and/or sewerage authority ordinances. See municipal chapters for additional information.

*Development in areas mapped as wetlands, flood prone areas, suitable habitat for endangered and threatened species as identified on the Department's Landscape Maps of Habitat for Endangered, Threatened and Other Priority Wildlife as Rank 2, 4, and 5, Natural Heritage Priority Sites, riparian zones, steep slopes, or designated river areas may be subject to special regulation under Federal or State statutes or rules, and interested persons should check with the Department for the latest information. Deposition of environmental features shall be for general information purposes only, and shall not be construed to define the legal geographic jurisdiction of such statutes or rules.

*Areas located within the watershed of a Freshwater One (FW1) stream, as classified in the Surface Water Quality Standards, and/or that have Class 1-A ground water (Ground Water of Special Ecological Significance), as classified in the Ground Water Quality Standards, are identified as "Non-degradation water areas based on the Surface Water Quality Standards at N.J.A.C. 7:18 and/or the Ground Water Quality Standards at N.J.A.C. 7:9B." Where the requirement has been studied and reviewed as part of the WMP process this classification appears on Map 63. Non-degradation water areas shall be maintained in their natural state (at least for posterity) and are subject to restrictions including, but not limited to, the following: 1) DEPR will not approve any pollutant discharge to ground water nor approve any human activity which results in a degradation of natural quality except for the upgrade or continued operation of existing facilities serving existing development. For additional information please see the Surface Water Quality Standards at N.J.A.C. 7:9B, and/or the Ground Water Quality Standards at N.J.A.C. 7:9B.

*Proposed developments lying into existing and proposed sewer service areas which require coastal permits must demonstrate compliance with all applicable sections of the Coastal

Facility Name	NJDEP
Alpine Village Mobile Home Court	NJ00107824
L'S Restaurant	NJ00107797
Sherman Cove Marina LLC	NJ00107609
Greenlee Golf Course	NJ00138220
Marlin Apartments	NJ00146897
Estell Manor - Atlantic County Park	NJ00139409
The Fareway Restaurant	NJ00128627
Chesapeake Station	NJ00107231
Goldway National Golf Club Plant	NJ00109886
Chestnut Lake Campground	NJ00136346
Hickory Haven Campground LLC	NJ00085711
Lazy River Condo Campground	NJ00085938
Yog Bears - Jellystone Park	NJ00085990
Recreation Valley Campground	NJ00085153
Oaks of Weymouth Plant	NJ00060682
Alpine Village Mobile Home Court	NJ00107824
Richard Glass Co	NJ00094741
Winding River Campground	NJ00085837
Plum Academy	NJ00134732
Holly Haven Campground LLC	NJ00134732
Holly Acres Best Holiday Trav-L-Rest	NJ00085707
Melissa Woods Mobile Home Park	NJ00129640
Buena Family Manor	NJ00084948
Indian Branch Park Campground	NJ00102717
Scholar, Inc.	NJ00082441
Platinum Playground	NJ00169745
Liberty Square Enterprises LLC	NJ00134937
Paradise Lakes Campground	NJ00089697
Smythe Professional Center	NJ00136778
Bay Breeze Village Mobile Home Park	NJ00084417
Colonial Meadows Family Campground	NJ00085150
Egg Harbor River Resort	NJ00084379
Colonial Mobile Home Park LLC	NJ00084336
Blairstown Hill Campground	NJ00088396
OSE Camera Inc	NJ00081071
Country Club	NJ00082621
Weymouth Twp. Elementary School plant	NJ00104333
Blue ood School	NJ00083940
Estell Manor Elementary School	NJ00106431
Folsom Elementary School	NJ00162892
Mooring at the water star	NJ00103132
Red Wing Lakes Campground	NJ00138738
South Jersey Gas Company	NJ00106511
St. Augustine Preparatory School	NJ00102842
Seaside Star Casino	NJ00080314
Villa Florencia Restaurant	NJ00168254
Wine&Glass Co	NJ00140004

